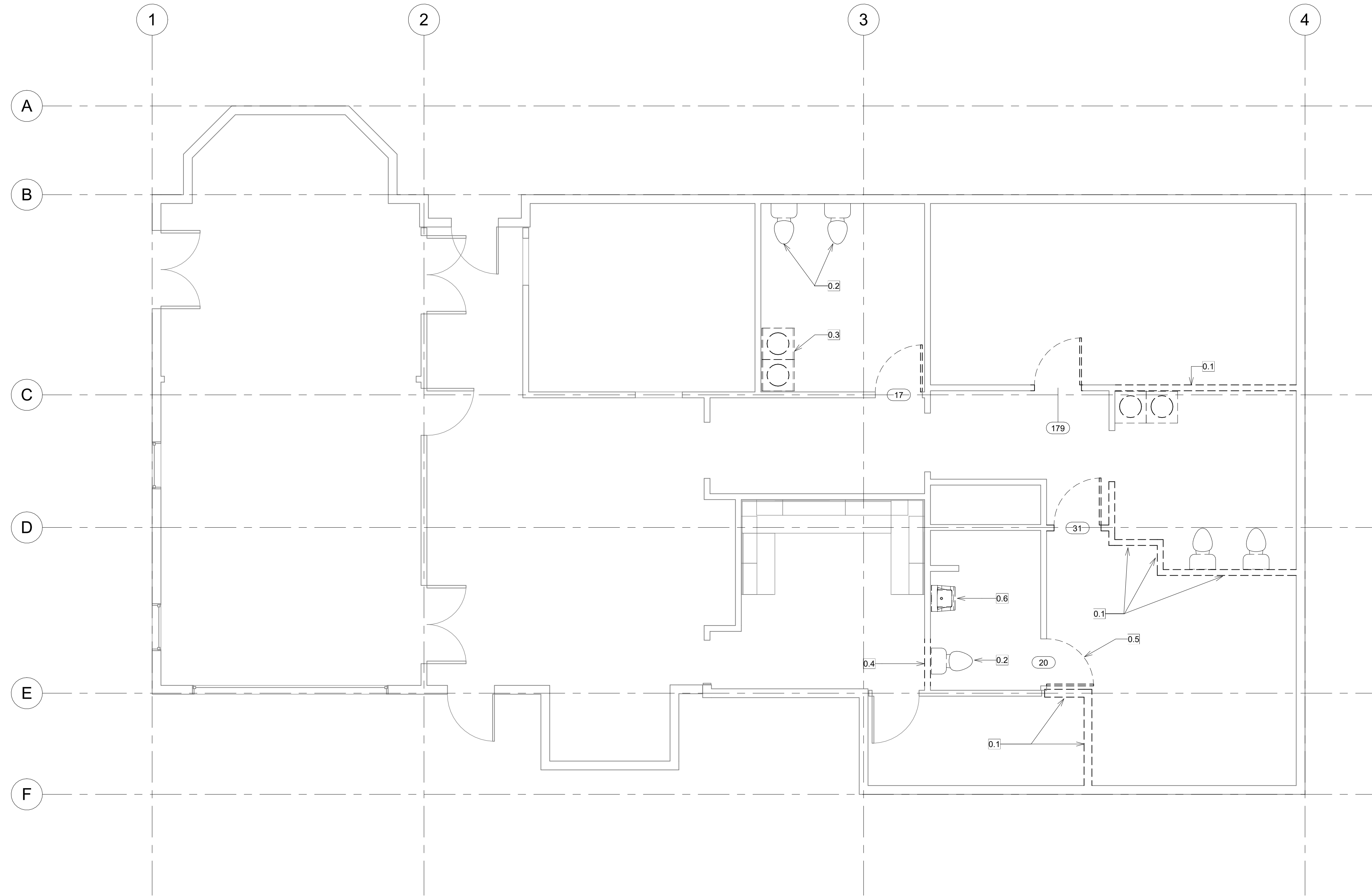


KEYNOTES

- 0.1 Remove wall from floor to ceiling.
- 0.2 Remove toilet and cap all lines according to building code.
- 0.3 Remove casework and fixtures, cap lines according to building code.
- 0.4 Cut in new 3' doorway, see construction plan and door schedule.
- 0.5 Remove door and patch matching adjacent materials, see construction plan.
- 0.6 Remove fixtures, cap lines and patch wall matching adjacent finishes.

Sheet:

A1



① T / FND - Demolition
1/4" = 1'-0"

Sheet Name: Demolition	Revision Date:
Scale: 1/4" = 1'-0"	Revision Date:
Date/Time Stamp: 11/4/2021 9:08:03 AM	Drawn By: EGW

Project:
Barnett Improvements
Project Address:
347 Poplar St.
Stockton, CA 95202

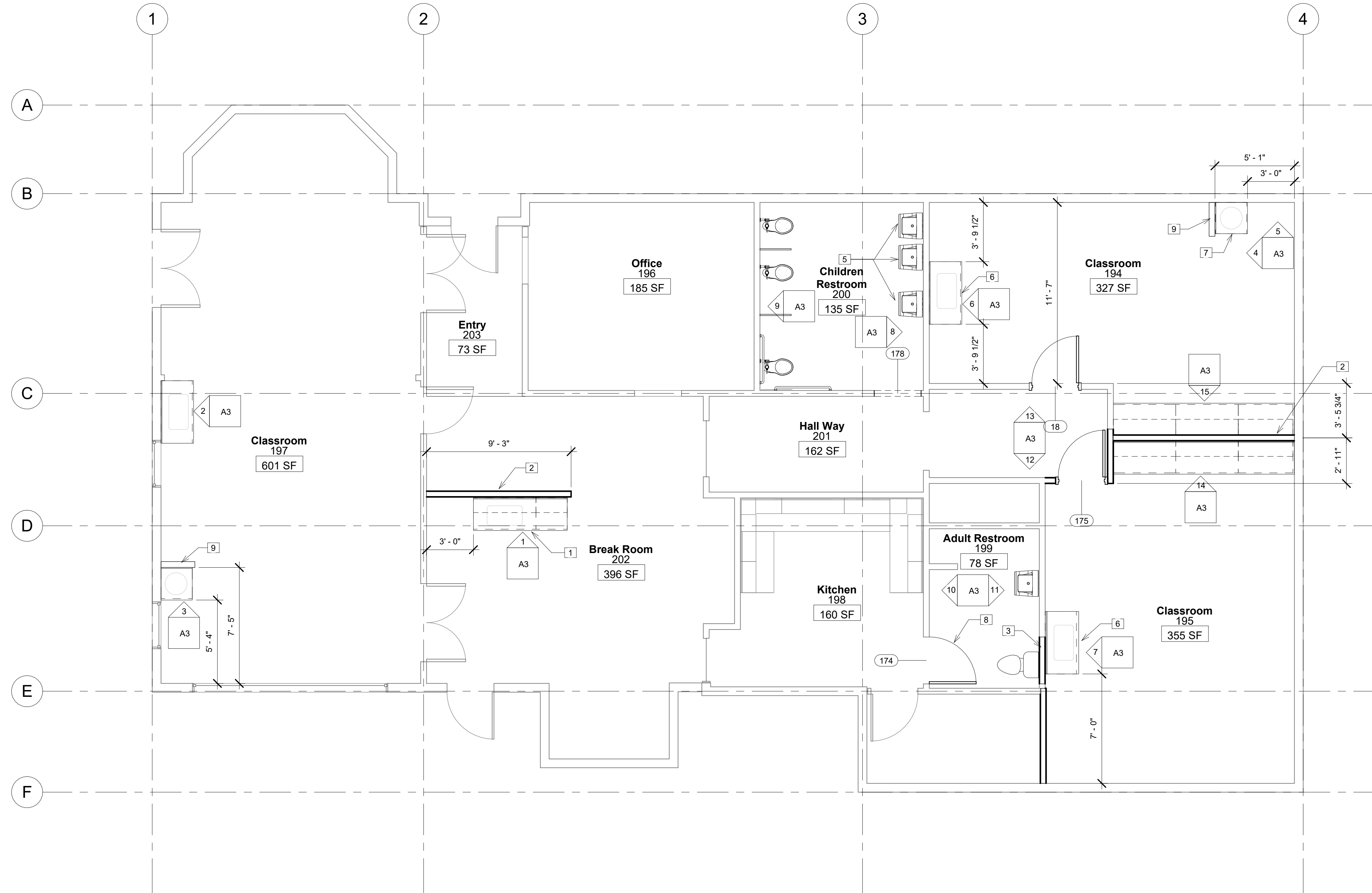


KEYNOTES

- 1 New cabinetry, see elevation plan.
- 2 New 2x4 wall with insulation.
- 3 Infill door opening and insulate matching adjacent materials, finish to match existing.
- 5 New wall mount sink, see elevation for height.
- 6 New classroom sink, see elevation.
- 7 New Adult sink, see elevation.
- 8 New 3' door, see schedule and elevation.
- 9 New 2x4 half wall.

Sheet:

A2

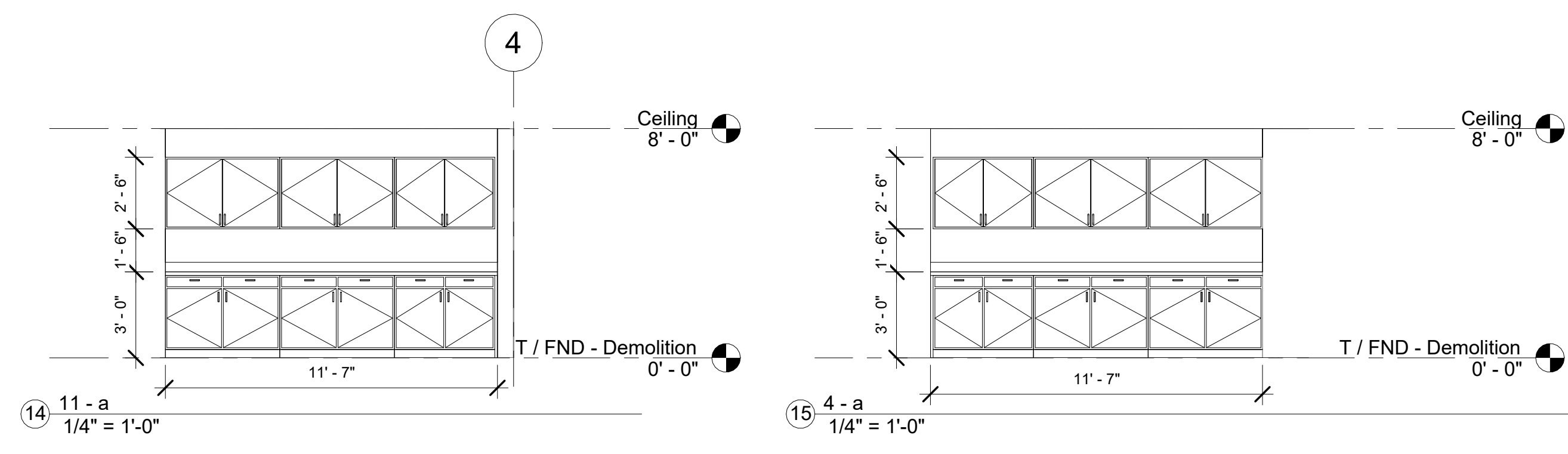
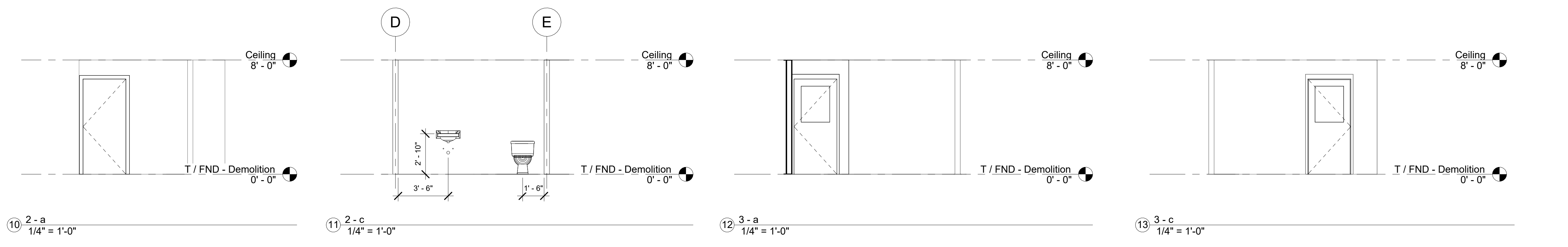
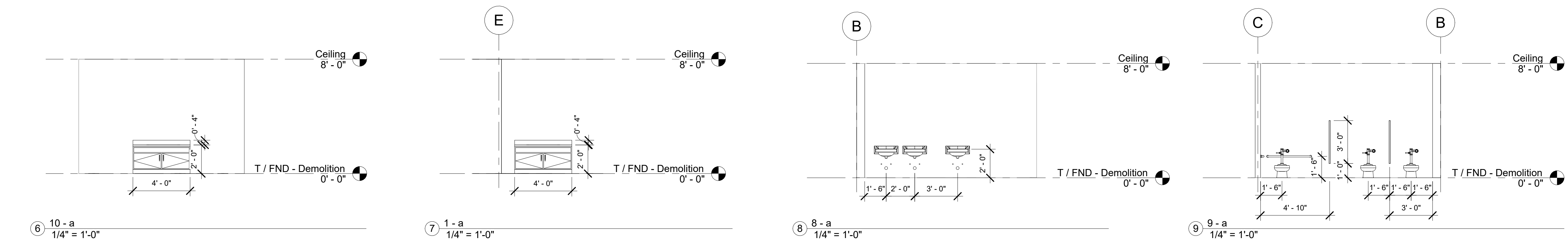
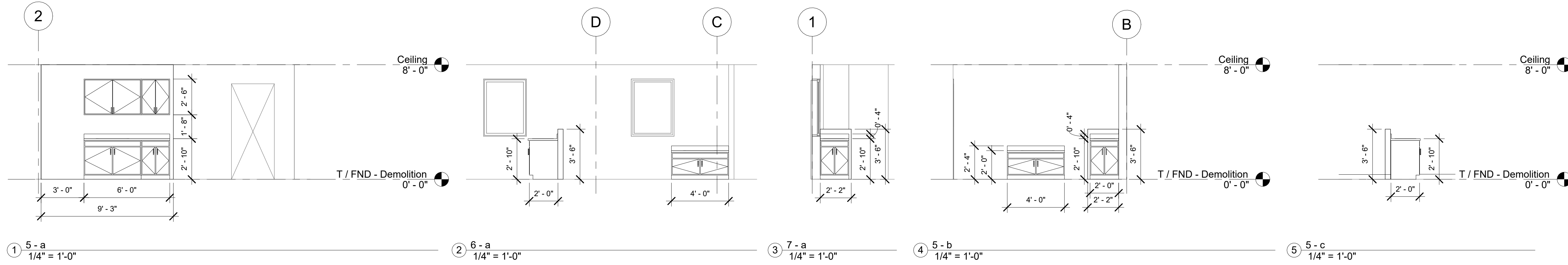


1 T / FND - Construction
1/4" = 1'-0"

Sheet Name: Construction	Revision Date:
Scale: 1/4" = 1'-0"	Drawn By: EGW
Date/Time Stamp: 11/4/2021 9:08:03 AM	

Project:
Barnett Improvements
Project Address:
347 Poplar St.
Stockton, CA 95202





CONSTRUCTION DOOR SCHEDULE								
Mark	Width	Height	Thickness	Finish	Construction Type	Phase Created	Phase Demolished	Comments
18	3' - 0"	6' - 8"	0' - 1 3/4"		SOLID CORE WITH VISION LITE	New Construction	None	1/4" TEMPERED GLASS
174	3' - 0"	6' - 8"	0' - 1 3/4"	PAINT	SOLID CORE	New Construction	None	
175	3' - 0"	6' - 8"	0' - 1 3/4"	PAINT	SOLID CORE WITH VISION LITE	New Construction	None	1/4" TEMPERED GLASS
178	3' - 0"	6' - 8"				New Construction	None	FRAMED OPENING

DEMOLITION DOOR SCHEDULE						
Mark	Width	Height	Thickness	Construction Type	Phase Demolished	Comments
17	3' - 0"	6' - 8"	0' - 1 3/8"		New Construction	REMOVE DOOR AND HINGES. PATCH JAMBS FOR SMOOTH FINISH
20	3' - 0"	6' - 8"	0' - 1 3/8"		New Construction	
31	3' - 0"	6' - 8"	0' - 1 3/8"		New Construction	
179	3' - 0"	6' - 8"	0' - 1 3/8"		New Construction	

Finish Schedule					
Number	Name	Wall Finish	Ceiling Finish	Floor Finish	Base Finish
194	Classroom	Tackable wall board	Semi Gloss Paint	Armstrong Connection Corlon Vinyl or Equal	4" Rubber Topset Base
195	Classroom	Tackable wall board	Semi Gloss Paint	Armstrong Connection Corlon Vinyl or Equal	4" Rubber Topset Base
196	Office	Tackable wall board	Semi Gloss Paint	Armstrong Connection Corlon Vinyl or Equal	4" Rubber Topset Base
197	Classroom	Tackable wall board	Semi Gloss Paint	Armstrong Connection Corlon Vinyl or Equal	4" Rubber Topset Base
198	Kitchen	Tackable wall board	Semi Gloss Paint	Armstrong Connection Corlon Vinyl or Equal	4" Cove
199	Adult Restroom	FRP	Semi Gloss Paint	Armstrong Connection Corlon Vinyl or Equal	5" Cove
200	Children Restroom	FRP	Semi Gloss Paint	Armstrong Connection Corlon Vinyl or Equal	5" Cove
201	Hall Way	Semi-gloss paint	Semi Gloss Paint	Armstrong Connection Corlon Vinyl or Equal	4" Rubber Topset Base
202	Break Room	Semi-gloss paint	Semi Gloss Paint	Armstrong Connection Corlon Vinyl or Equal	4" Rubber Topset Base
203	Entry	Semi-gloss paint	Semi Gloss Paint	Armstrong Connection Corlon Vinyl or Equal	4" Rubber Topset Base

Sheet Name: Elevations

Scale: 1/4" = 1'-0"

Date/Time Stamp: 11/4/2021 9:08:04 AM

Revision Date:

Drawn By: EGW

Project: Barnett Improvements

Project Address: 347 Poplar St. Stockton, CA 95202

